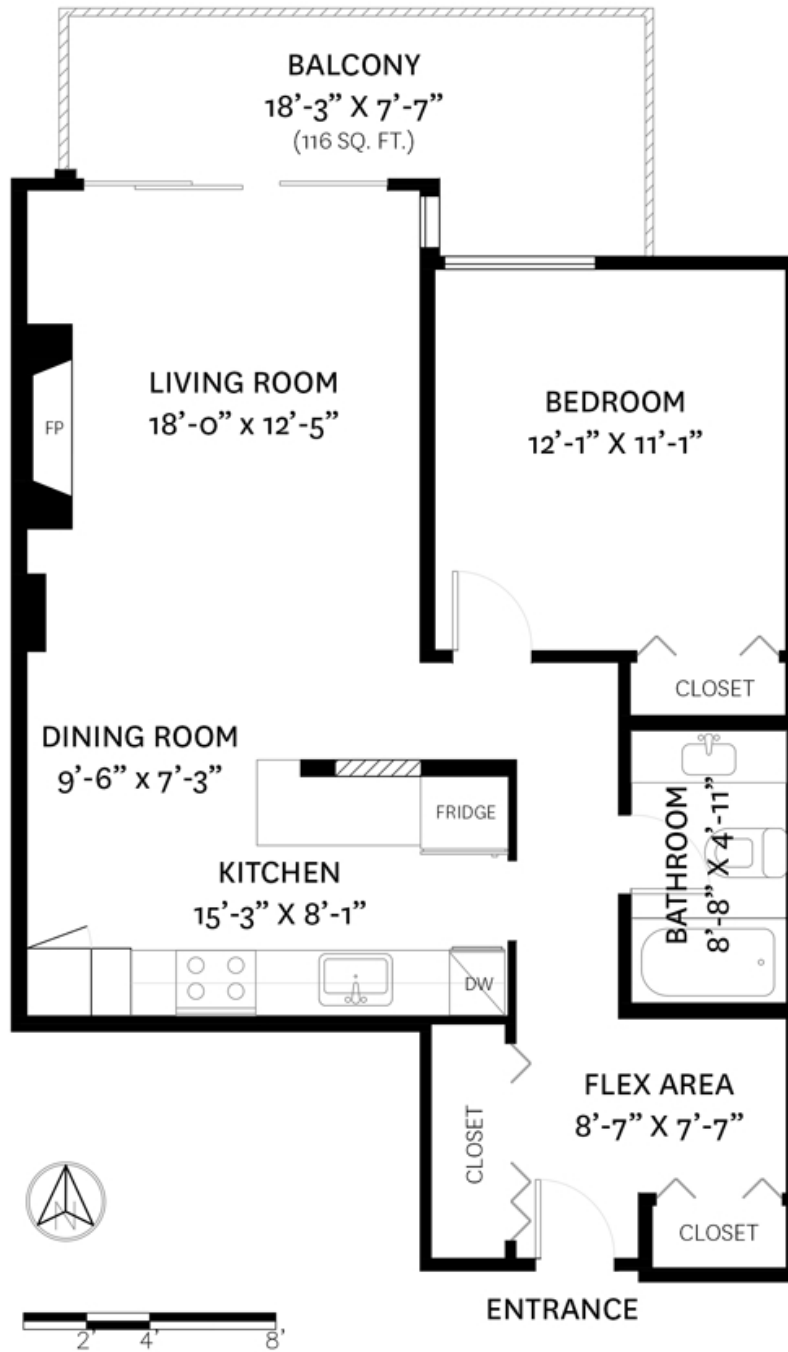


# 401 - 1405 WEST 15TH AVENUE, VANCOUVER, BC

MAIN FLOOR TOTAL: 742 SQ. FT.  
BALCONY: 116 SQ. FT.



**MAIN FLOOR PLAN**  
Ceiling Height: 7'-11"



## ANGÈLE L'ABBÉ

OAKWYNREALTY

REAL ESTATE

floor plan designed by ishot.ca Enterprises Inc.  
604.368.7979 ishot.ca