

**35-6555 192A Street  
Surrey**

# ANGÈLE L'ABBÉ

REAL ESTATE

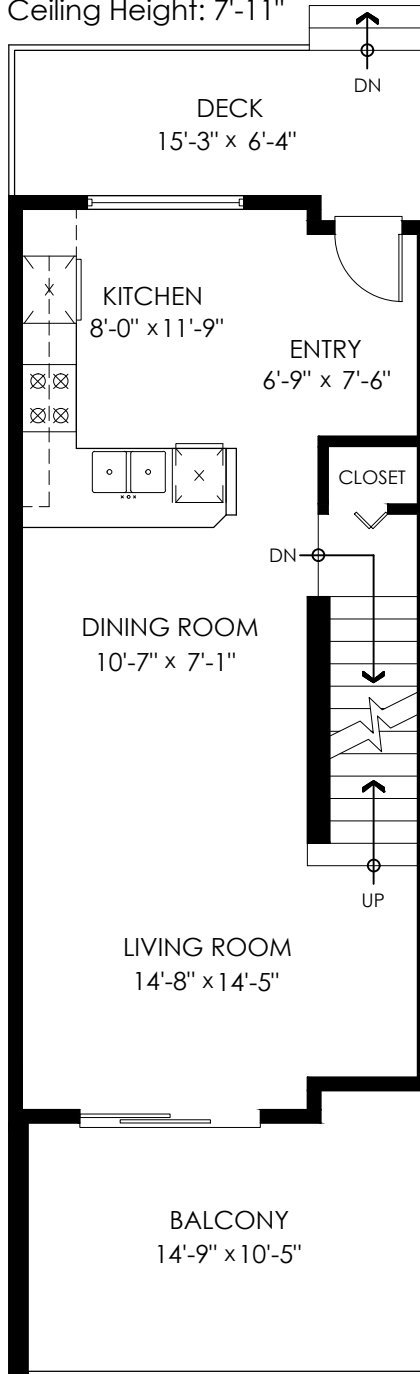
Main Floor: 531 sq.ft.  
Upper Floor: 559 sq.ft.  
Entry Floor: 113 sq.ft.  
**Total Livable: 1,203 sq.ft.**

Garage: 343 sq.ft.  
**Grand Total: 1,546 sq.ft.**

Carport: 188 sq.ft.  
Deck: 86 sq.ft.  
Balcony: 141 sq.ft.  
Porch: 31 sq.ft.  
**Total Extras: 446 sq.ft.**

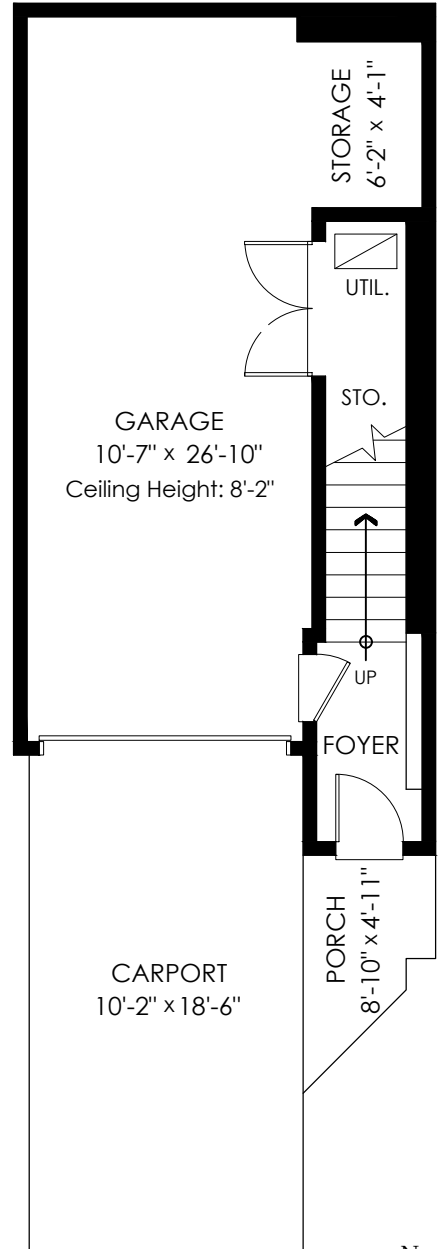
**Main Floor Plan**

Floor Area: 531 sq.ft.  
Ceiling Height: 7'-11"



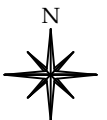
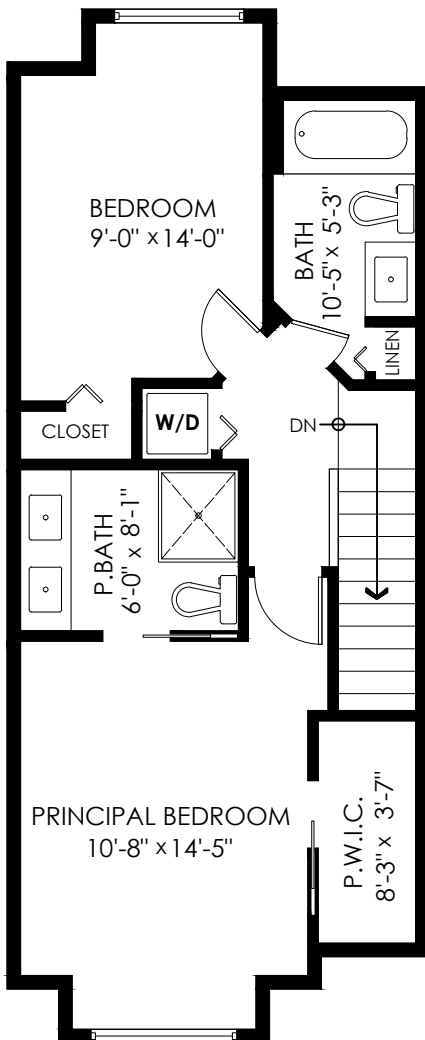
**Entry Floor Plan**

Floor Area: 113 sq.ft.



**Upper Floor Plan**

Floor Area: 559 sq.ft.  
Ceiling Height: 8'-0"



MEASURED ON: (2022-08-03)

info@pixlworks.com www.pixlworks.com 604.329.5788



E&O Insured. Total square foot calculated to gross unit area. SQFT based on interior measurements to exterior walls, not taken from original blueprints, may include unfinished area. This is for marketing purposes only and is not intended for architectural/construction use. All details, sizes & placements should be considered approximate within +/- 2% tolerance.