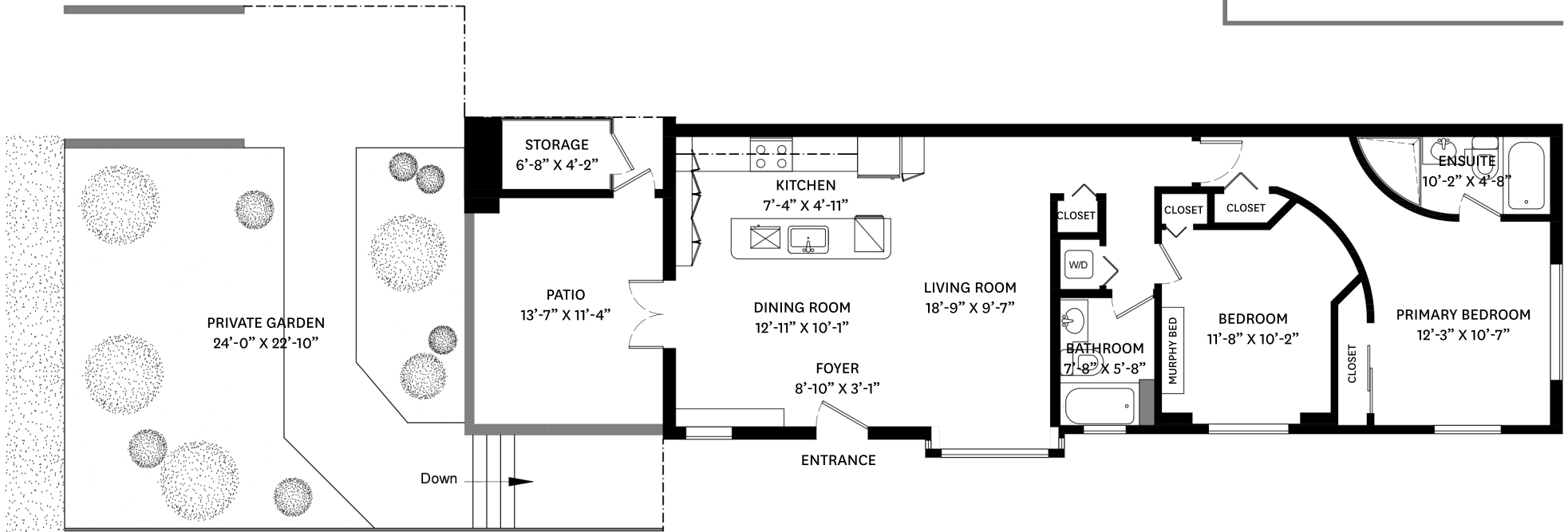
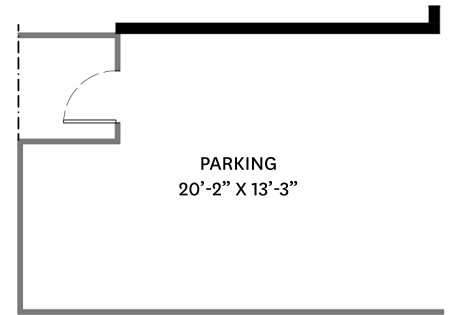


# 1846 WEST 12TH AVENUE, VANCOUVER, BC

**MAIN FLOOR TOTAL: 1,020 SQ.FT.**  
**PRIVATE GARDEN: 615 SQ.FT.**  
**PATIO: 153 SQ.FT.**  
**PARKING: 243 SQ.FT.**  
**STORAGE: 27 SQ.FT.**



## MAIN FLOOR PLAN

Ceiling Height: 8'-3"

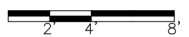


# ANGÈLE L'ABBÉ

REAL ESTATE

OAKWYN REALTY

THE FLOOR PLAN ILLUSTRATION IS NOT SUITABLE FOR CONSTRUCTION/ARCHITECTURAL PURPOSES.  
MEASUREMENTS ARE APPROXIMATE AND MAY NOT BE TO SCALE. E&O INSURED.



floor plan designed by  
ishot.ca Enterprises Inc.  
604-368-7979  
<http://ishot.ca>